



DTA
Damen Technical Agencies



Industrial Hydraulic Pumps T6D

Denison Vane Technology, fixed displacement

Hydraulic Pumps

- Hydraulic Motors
- Hydraulic Valves
- Hydraulic Cylinders
- Hydraulic Filtration
- Hydraulic Accumulators



ENGINEERING YOUR SUCCESS.

We are doing our parts to keep you moving!

DTA your 1 Stop Shop for Hydraulics, Pneumatics and Power Transmissions.

DECLARATION OF CONFORMITY

DTA Hydraulics is a tradename of Damen Technical Agencies BV, supplying hydraulic parts to various industries since 1990. As a Certified Distributor Hydraulics by Parker Hannifin and Authorized Denison Vane Pump Assembler, we guarantee the use of original parts and components. As such we provide you with vane pumps of the same level of quality and warranty conditions as the factory does.

We highly recommend to **use genuine Denison Hydraulics spare parts only** in order to ensure smooth operation and longer service life. Spare parts that we have on stock include pump cartridge kits, shaft and bearing assemblies, seal kits and non-wearing parts of both the T6 and T7 series vane pumps.



**ALL VANE PUMPS SUPPLIED OR REPAIRED BY
DTA HYDRAULICS HAVE BEEN ASSEMBLED ACCORDING
TO THE LATEST FACTORY SPECIFICATIONS WITH
BRAND NEW AND GENUINE DENISON HYDRAULICS PARTS**

We are able to provide you a large variety of options of the original Parker Denison single, double, and triple vane pumps. We can build any customized vane pump from our stock of genuine parts. You can now easily configure that vane pump yourself with the Denison Hydraulics Vane Pump Configurator.

vanepump.eu/vanepumps

Use advanced search to filter results based on configurable options and select any of the 25,000 vane pumps that are listed in our online catalogue. Most of the models are available from stock and ready for shipment to any place in the world instantly. We can supply **Any part, Anytime, Anywhere!**



ORDERING CODE - T6D SERIES INDUSTRIAL APPLICATION

Model No.

T6D - 045 - 1 R 00 - B 1

Series

Cam ring

(Delivery at 0 bar & 1500 r.p.m.)

014 = 71,4 l/min	035 = 166,5 l/min
017 = 87,3 l/min	038 = 180,4 l/min
020 = 99,0 l/min	042 = 204,0 l/min
024 = 119,3 l/min	045 = 218,5 l/min
028 = 134,5 l/min	050 = 237,0 l/min
031 = 147,4 l/min	

Type of shaft

- 1 = keyed (SAE C)
- 2 = keyed (no SAE)
- 3 = splined (SAE C)
- 4 = splined (no SAE)

Modification

Seal class

- 1 = S1 (for mineral oil)
- 4 = S4 (for resistant fluids)
- 5 = S5 (for mineral oil and fire resistant fluids)

Design letter

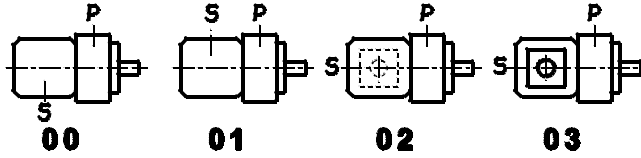
Porting combination

00 = standard

Direct. of rotation (view on shaft end)

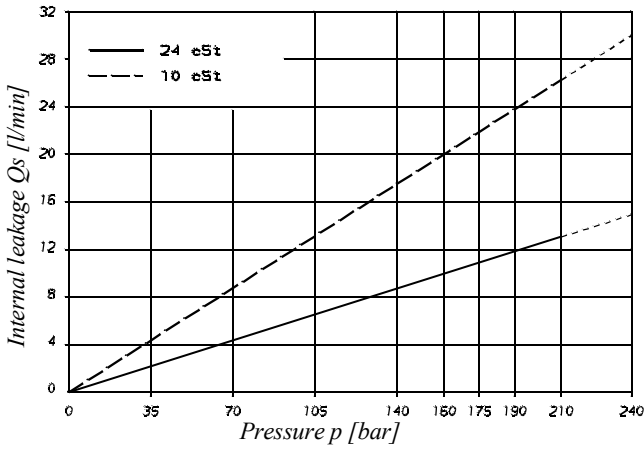
R = clockwise

L = counter-clockwise

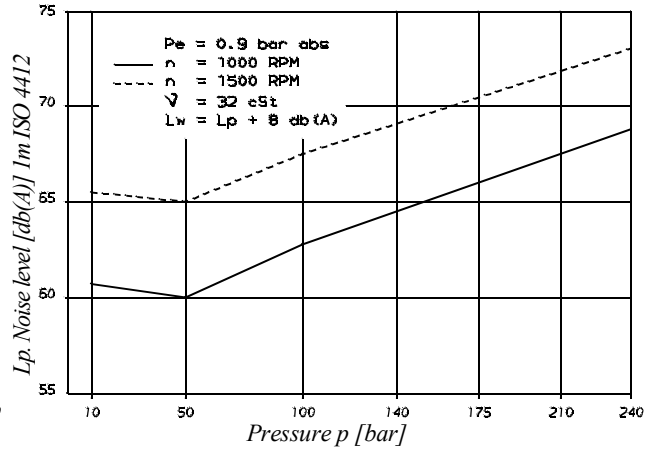


P = Pressure port
S = Suction port

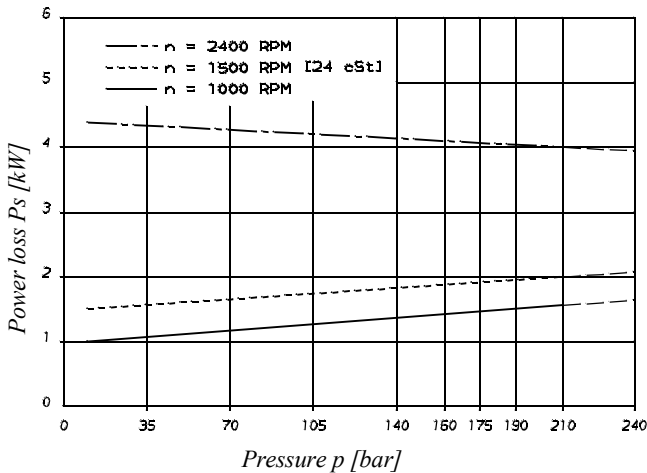
INTERNAL LEAKAGE (TYPICAL)



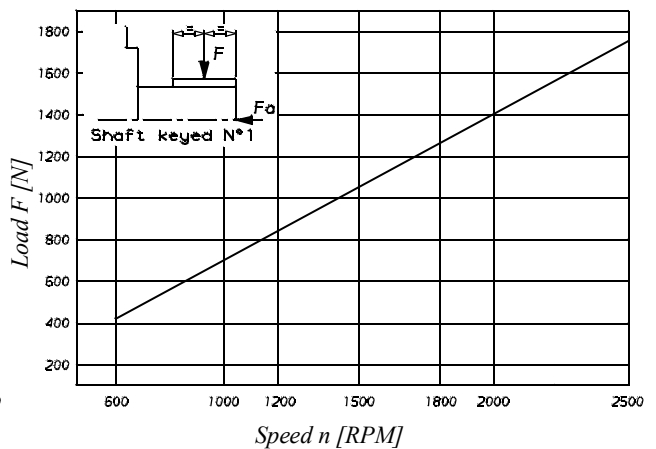
NOISE LEVEL (TYPICAL)
T6D - 038



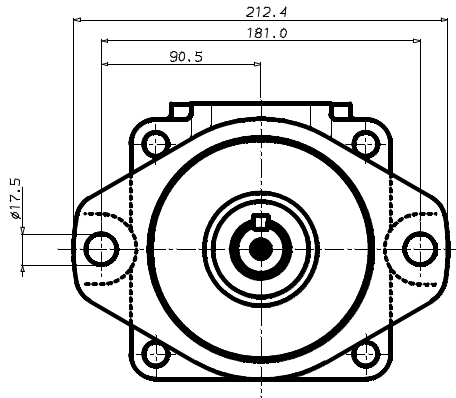
POWER LOSS HYDROMECHANICAL (TYPICAL)



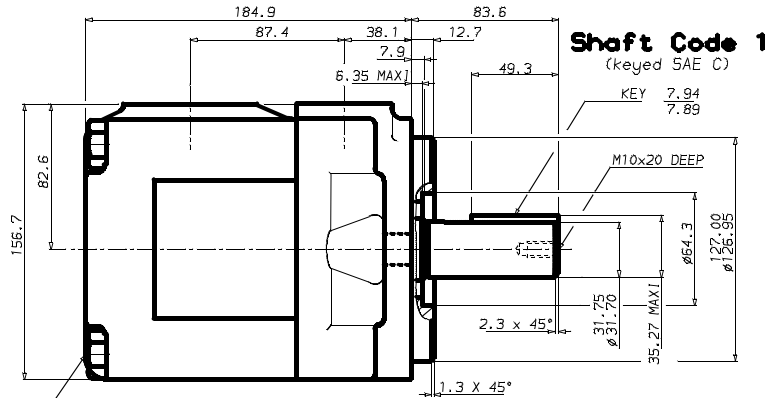
PERMISSIBLE RADIAL LOAD



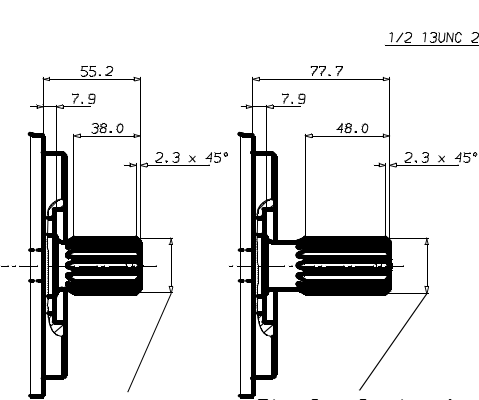
Maximum permissible axial load $F_a = 1200\text{ N}$



MOUNTING TORQUE 187 Nm.



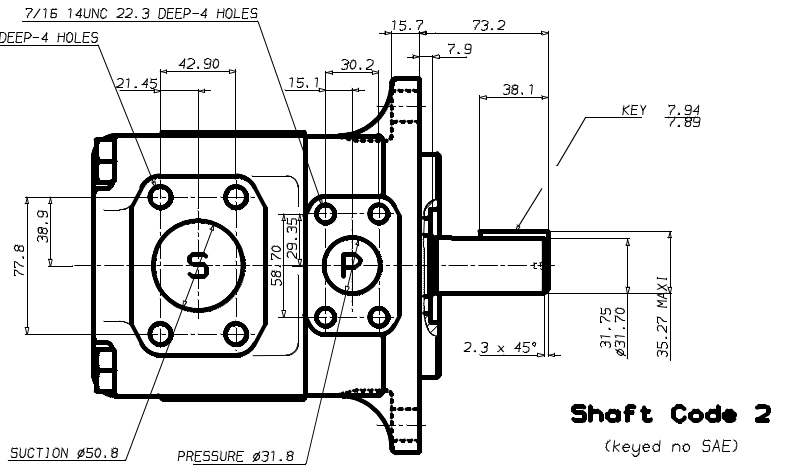
Shaft Code 1
(keyed SAE C)



Shaft Code 3 **Shaft Code 4**

SAE C Spined shaft
Class 1-J498 b
12/24 d.p.-14 teeth
30° pressure angle
Flat root side fit

No SAE Spined shaft
Class 1-J498 b
12/24 d.p.-14 teeth
30° pressure angle
Flat root side fit



Shaft Code 2
(keyed no SAE)

Shaft torque limits [ml/rev x bar]		
Pump	Shaft	V x p max.
T6D	2	34590

OPERATING CHARACTERISTICS - TYPICAL [24 cSt]

Series	Volumetric Displacement Vi	Speed n [R.P.M.]	Flow qve [l/min]			Input power P [kW]		
			p = 0 bar	p = 140 bar	p = 240 bar	p = 7 bar	p = 140 bar	p = 240 bar
014	47,6 ml/rev	1000	47,6	38,3	32,1	1,5	12,5	20,7
		1500	71,4	62,1	55,9	2,3	18,5	30,6
017	58,2 ml/rev	1000	87,3	78,0	71,8	2,5	22,2	37,0
		1500	134,5	125,2	119,0	3,2	33,2	55,9
020	66,0 ml/rev	1000	66,0	56,7	50,5	1,7	16,8	28,0
		1500	99,0	89,7	83,5	2,8	24,9	41,7
024	79,5 ml/rev	1000	79,5	70,2	64,0	1,9	19,9	33,4
		1500	119,3	110,0	103,8	3,0	29,6	49,8
028	89,7 ml/rev	1000	89,7	80,4	74,2	2,0	22,3	37,5
		1500	134,5	125,2	119,0	3,2	33,2	55,9
031	98,3 ml/rev	1000	98,3	89,0	82,8	2,1	24,3	40,9
		1500	147,4	138,1	131,9	3,3	36,2	61,0
035	111,0 ml/rev	1000	111,0	101,7	95,5	2,3	27,3	46,0
		1500	166,5	157,2	151,0	3,5	40,7	68,7
038	120,3 ml/rev	1000	120,3	111,0	104,8	2,4	29,4	49,8
		1500	180,4	171,1	164,9	3,7	43,9	74,3
042 ¹⁾	136,0 ml/rev	1000	136,0	126,7	120,5	2,6	33,1	56,0
		1500	204,0	194,7	188,5	4,0	49,4	83,7
045 ¹⁾	145,7 ml/rev	1000	145,7	136,4	130,2	2,7	35,3	59,9
		1500	218,5	209,2	203,0	4,1	52,8	89,5
050 ¹⁾	158,0 ml/rev	1000	158,0	148,7	145,0 ²⁾	2,8	38,2	56,8 ²⁾
		1500	237,0	227,7	224,0 ²⁾	4,4	57,0	85,0 ²⁾

1) 042 - 045 - 050 = 2200 R.P.M. max.

2) 050 = 210 bar max. int.

Port connection can be furnished with metric threads.



**ANY PART
TIME
WHERE**

we are doing our parts to keep you moving!

Damen Technical Agencies B.V.

Prins Willemstraat 10 - 4791 JR Klundert - The Netherlands

+31 - 168 - 407 144

info@vanepump.eu - vanepump.eu - dta.eu